

**OWNERS
MANUAL**

PTR

**Roller-Delayed BlowBack
Weapon Systems**
"MODELS: .308 and 7.62x39"



PTR

READ THIS FIRST

Warning! It is your responsibility to assure that your firearm is handled, fired, and stored safely and responsibly at all times.

This manual provides instructions on the operation and maintenance of your PTR firearm. Read and understand it carefully before you try and use your firearm. Your safety, and that of those around you, depends on your knowledge of your firearm and on your knowledge of safety rules common to all firearms. Please study the common-sense safety rules noted in this manual. Your first responsibility as a gun owner is always safety!

NOTICE!

PTR Industries has no control over the use of your firearm, and shall not be responsible for injury, death, or damage to property resulting from either intentional, or accidental, discharge of this firearm. In addition PTR shall not be responsible for proper function of the firearm when it is used for purposes, or subjected to treatment, for which it was not intended. PTR will not honor claims which may result from careless or improper handling, unauthorized adjustments, or parts replacement, corrosion, neglect, use of the wrong type or caliber of ammunition, or the use of ammunition other than original, high quality, commercially manufactured ammunition in good condition, or any combination thereof.

SAFETY FIRST! IT'S YOUR RESPONSIBILITY!

- Treat every gun as if it is loaded... **AT ALL TIMES!**
- Always keep the muzzle pointed in a safe direction.
- Keep your finger off the trigger and out of the trigger guard until you are ready to shoot.
- Always leave your selector in the "SAFE" position until you are ready to fire.
- Always keep your firearm unloaded when not in use.
- Be sure of your target and everything beyond it.
- **ALWAYS WEAR HEARING AND EYE PROTECTION WHEN SHOOTING.**
- Use only clean, high quality, factory loaded ammunition in good condition. Do not use hand loaded or reloaded ammunition.
- Be sure that your barrel is clear of any obstructions prior to firing.
- Do not alter or modify your firearm.
- Do not change your firearm's trigger pull. Alterations of trigger pull can affect engagement settings and may cause an accidental misfire.
- Store your firearm and ammunition separately, under lock and key, and out of the reach of children.
- Practice all general safety and etiquette guidelines when using a firearm.

NOTE! THIS MANUAL COVERS NUMEROUS MODELS AND/OR CALIBERS OF PTR FIREARMS. THE TEXT, PICTURES AND EXPLODED VIEWS DO NOT NECESSARILY DEPICT ALL VARIATIONS. CONTACT US FOR INFORMATION ON PARTS THAT ARE UNIQUE TO YOUR MODEL.

TABLE OF CONTENTS



Owner Essentials	2
PTR Specifications and Measurements	4
Break-In Procedures.....	4
Ammunition Notes/Recommendations	5
Bolt Gap Specifications, Measurements and Maintenance	5-6
General Maintenance	6
General Operation	6
Disassembly Procedures	7
Bolt Carrier Reassembly Procedures	8
Firearm Reassembly Procedures	8
Use of Your PTR Firearm	9
Use of the Rear Sight	10
Frequently Asked Questions	11
PTR Firearm Exploded View/Parts List.....	12-15
Warranty, Service & Return Information	16-17

This manual addresses the the Precision Target Rifle (PTR) Model-91, 32, PDW and SBR products. These products are manufactured in the United States using original HK drawings, specifications, and fixturing, enabling us to produce the most true to original design line of US made roller-lock weapons on the market today.

PTR SPECIFICATIONS, MEASUREMENTS AND MAINTENANCE

CALIBER:	MODEL 91 - .308	MODEL 32 - 7.62X39
Magazine:	10 & 20 Rd Box	10 & 30 Rd AK-47 Magazine
Operating Principle:	Recoil operated	Recoil operated
Locking System:	Delayed roller-lock	Delayed roller-lock
Action:	Semiautomatic only	Semiautomatic only
Rifle overall length:	40 inches	40 inches
Carbine overall length:	38 inches	38 inches
PDW/SBR overall length:	23.5 inches	23.5 inches
Rifle barrel length:	18 inches	18 inches
Carbine barrel length:	16.25 inches	16.25 inches
PDW/SBR barrel length:	8.375 inches	8.375 inches
Sights:	Front hooded post, rear rotary drum sight with adjustments for windage and elevation. Distance selection of 100, 200, 300, and 400 yards.	

Each PTR firearm is shipped with the following:

- Owner's manual
- Warranty Card
- Trigger lock or Cable lock

INITIAL CLEANING AND BREAK IN

Make sure to thoroughly clean your product prior to firing. Because there are so many options in cleaning accessories and methods, we leave the specifics of this process to you. However, after cleaning, but before firing, lightly oil all the internal parts (bolt head, bolt carrier, locking piece), while keeping the barrel and chamber dry. PTR weapons are made to tighter tolerances than most other weapons of similar design, except HK, so a break-in period of 200-300 rounds is highly recommended. This will allow machined surfaces to smooth out, in turn smoothing out the action of your new weapon. This break-in period will also ensure that you achieve optimum accuracy and barrel life.

BREAK IN PROCEDURES:

- I. Fire 10 single shots. After each shot, push a cotton patch, wet with solvent through the bore. Then wet a bronze brush with solvent and stroke the barrel five to ten times. Follow with another wet patch and then enough dry patches to completely remove any solvents and/or wetness from the barrel.
- II. Fire 10-20 shots, clean as above after each round of firing. Repeat step 2 until you have reached the suggested 200-300 rounds.

During this break-in period you may experience the following:

Intermittent occurrences of failure to feed, or failure to eject. If you are experiencing any failure issues after you have completed the suggested break in of your new PTR product, or if malfunctioning is excessively frequent during the break-in period: stop shooting your PTR, make sure it is unloaded, store it properly, and contact PTR customer service for support.

- **Failure to feed** – This is when your product does not properly seat the round in the chamber prior to firing.
- **Failure to eject** – This is when your product does not eject the spent casing from the chamber after firing.

AMMUNITION

PTR sells weapons chambered in various calibers. It is vital that you understand your weapons cartridge nomenclature and only fire cartridges for which your purchased weapon was designed. To assist you, the name of the appropriate cartridge will be stamped on the receiver. If you have any questions regarding the appropriate caliber cartridge for your product please contact PTR prior to firing!

Please remember, PTR recommends the use of original, high quality commercially manufactured ammunition in good condition. PTR will not honor claims which may result from careless or improper handling, unauthorized adjustments, unauthorized parts replacement, corrosion, neglect, or the use of the wrong type or caliber of ammunition.

Due to the nature of the delayed blowback, roller-lock operating system, specifically the extraction process and its resulting damage to the casing, we do not recommend you reload any cartridge fired from a PTR product.

NOTE: Some types/brands of ammunition have unique characteristics that reduce reliability in semi-automatic firearms. PTR strongly recommends that you purchase and test a small quantity of any type of ammunition in your firearm prior to purchasing any particular item in large quantities.

BOLT GAP SPECIFICATION, MEASUREMENT AND MAINTENANCE

The Bolt Gap is a very important aspect of any PTR weapon that needs to be carefully inspected and monitored to ensure a long lifetime for your firearm, as well as its safe and reliable functioning. Bolt gap is the distance measured between the rear bottom of the bolt head and the front of the bolt carrier, when the two are fully collapsed towards each other. This space or “gap” can be measured with a set of feeler gauges which can be purchased at any home improvement or automotive shop.

Safe, reliable, and acceptable bolt gap measurements for ALL PTR products after break-in will fall between .010”-.018” (.254 mm- .457mm).

The following instructions will tell you how to measure your bolt gap:

- I. Follow the break-in instructions for your firearm.
- II. Move your selector to the “SAFE” position. Remove your magazine and ensure the chamber is clear, and that the firearm is safe.
- III. Disassemble your firearm and thoroughly clean the internal components, specifically the bolt head, bolt carrier, trunnion, barrel face, and locking piece. Once this has been done, reassemble your firearm.
- IV. Charge your firearm by pulling the charging handle rearward and locking it into the recessed slot of the cocking tube. Once this has been done you can “slap” down on the handle, which will send the carrier and charging handle forward very quickly. **Do not attempt to slow the charging handle as it rides forward, this will disrupt the measurement process.** Pull the trigger or “dry fire”.

- V. Repeat the “charging” process explained in step IV about 5 or 6 times, each time pulling the trigger, or “dry firing”.
- VI. With the firearm in the charged position and having pulled the trigger, look into the magazine well. Through the empty window of the magazine well, you will be able to see where the carrier and bolt head meet. The gap between the two is the area to measure. Insert your feeler gauge to determine the measurement. The appropriate gauge will fit somewhat tightly into the gap.

If your bolt gap measurement is below .010” after the initial break in of your weapon please contact PTR customer service for support.

Over the lifetime of use of your PTR firearm the bolt gap should remain at or around the same measurement taken after break in. If your bolt gap drops drastically over the lifetime of your firearm, please contact PTR customer service for support.

GENERAL MAINTENANCE

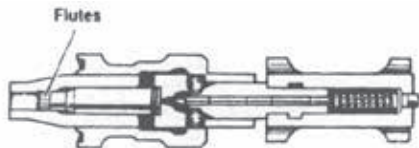
This firearm is rugged, well constructed and, when properly used and maintained, reliable. It is nonetheless a mechanical device and, as such, there is the potential for malfunction. As a firearm, it can be very dangerous if misused or operated improperly. Accordingly, it is wise to exercise due care and caution before operating.

PTR suggests that the purchaser clean the firearm after each use. This will help ensure a lifetime of safe, reliable, and enjoyable shooting.

When your firearm is not in service it should be stored in a cool, dry, and safe location. It should be secured from unauthorized persons (especially children) under lock and key.

GENERAL OPERATION

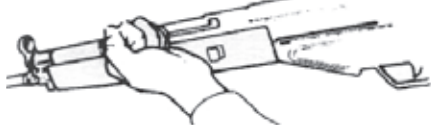
PTR weapons systems operate on a delayed blowback, roller-locked principle, one of the safest and most reliable semiautomatic actions currently in use. With this style of action, the bolt group travels in a linear fashion from front to rear, riding on the recoil rod/spring assembly.



The bolt head itself has two locking rollers on its sides. While this action is "in battery", the bolt group is held in place inside the trunnion via the bolt head locking rollers. When the action is fired, the thrust from the cartridge case pushes the bolt rearward slightly, however the bolt group is initially held in place by the bolt head locking rollers. When the excess pressure from the fired round's gases escape through the flutes machined in the chamber and the gas pressure drops to a safe limit, the bolt head rollers will unlock and allow the bolt group to cycle rearward. As the action is cycling rearward, it extracts and ejects the spent casing through the ejection port. When the bolt group travels as far back along the recoil rod as it can, it hits a mechanical buffer and is then propelled forward along the recoil rod by the force of the recoil spring. As the bolt group is coming forward it will strip and chamber the next round and put the firearm "in battery" once again.

DISASSEMBLY PROCEDURES – FIELD STRIPPING YOUR PTR

1. Before beginning disassembly, remove the magazine and set the selector lever on “S” or “SAFE”; then check the weapon to make sure it is unloaded then remove all slings, scopes and scope mounts.



2. To inspect the weapon, unfold the cocking handle located on the left side of the weapon at the front of the handguard and pull the cocking handle towards you (rearward); then rotate the handle upward into the retaining notch located near the rear of the cocking tube. Once inspection is completed, pull the cocking handle slightly rearward and rotate it downward out of the retaining notch; then release the handle to

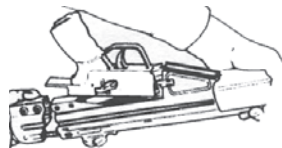


allow it to return to its forward most position. Then point the muzzle in a safe direction, rotate the selector lever to “F” or “FIRE” and depress the trigger to allow the bolt to return to its closed or fired position. Rotate the selector lever back to “S” or “SAFE” before proceeding.

3. Remove the two takedown pins located just forward of the stock. No tools should be required to push the pins through from the right to left side of the firearm.

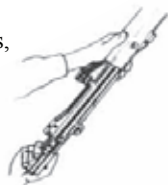


4. The butt stock/cap and recoil spring assembly should now be easily removed by pulling the butt stock/cap straight back to the rear. The entire butt stock/cap and recoil spring assembly will come off as one unit.



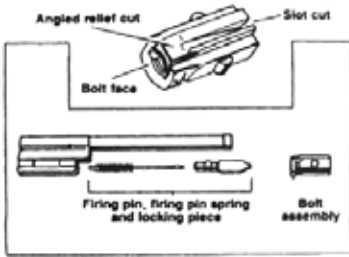
5. With the butt stock/cap assembly removed, you can now remove the entire trigger group by pulling downward on the pistol grip.

6. The bolt carrier should slide easily out of the rear of the receiver by merely tipping the muzzle upwards, unfolding the cocking handle and then pulling it rearward. This action should pull the bolt carrier in position for you to grasp it and remove it from the receiver.



7. To take apart the bolt head/carryer assembly, first turn the bolt head one half turn counterclockwise and pull it forward off of the bolt carrier. Then push in and slowly rotate the locking piece counterclockwise until its lug clears the bolt carrier. You can now remove the locking piece, firing pin and firing pin spring from the bolt carrier. No further disassembly of the firearm is either necessary, or recommended, beyond this point. Any repair or maintenance procedure that requires further disassembly of the weapon should be referred to a qualified gunsmith.

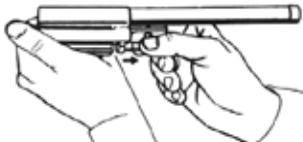
BOLT CARRIER REASSEMBLY PROCEDURE



1. Insert the firing pin, firing pin spring and locking piece into the bolt head carrier. Depress the locking piece into the carrier and turn it one quarter turn clockwise.

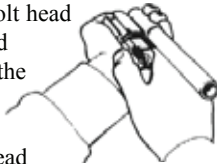


2. Insert the bolt head onto the locking piece, making sure the slot cut on the bolt head is at the top. Turn the bolt head slightly clockwise until the angled relief cut at the base of the bolt head is aligned with the bolt head locking lever.



3. Push the bolt head against the bolt head locking lever until the base of the bolt head is touching the bolt carrier. With your thumb and index finger, squeeze the bolt head rollers into the bolt head to move the bolt head forward slightly, creating a small gap between the back of the bolt head and the bolt carrier.

4. Grasping the bolt head carrier firmly with one hand and the bolt head itself firmly with your other hand, turn the bolt head clockwise until the slotted relief cut on the bottom of the bolt head is aligned with the bottom of the bolt carrier. Next, pull the bolt head and the bolt carrier as far apart as possible. At this point the bolt carrier is ready to be installed.



WEAPON REASSEMBLY PROCEDURE

1. Grasp the receiver and make certain that the cocking handle is in its forward most position. Then insert the complete bolt carrier assembly into the rear of the receiver, inserting it as far as possible. Once the bolt carrier assembly is inserted into the rear of the receiver, point the muzzle of the weapon at the ground and it will seat itself into the trunnion.



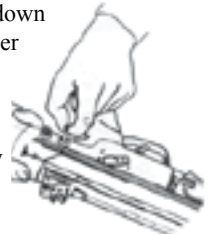
2. Reinstall the trigger group by first inserting the front of the trigger group over the rear of the magazine well, then rolling the rear end with the pistol grip into position.



3. Slide the butt stock/cap recoil spring assembly back into place over the rear of the receiver, with the recoil spring properly positioned in its recess in the bolt carrier.



4. Insert the two takedown pins in their proper holes from the left side to the right side of the receiver. The weapon is now fully assembled.



5. Re-attach all slings, scopes and scope mounts.

USE OF YOUR PTR

1. Before using your PTR weapon, be sure no magazine is in the magwell and no round is in the chamber, and put the safety selector lever in the “S” or “SAFE” position. The safety selector lever is easily manipulated by the thumb of your right hand if you are right handed or by the thumb or pointer finger of your left hand if you are left handed.
2. To load the magazine, hold the magazine in either hand and use your other hand to place the first round on top of the magazine follower making sure that the bullet end of the round is pointed toward the front of the magazine. Apply downward pressure on the round with your thumb to fully seat the round in the magazine. Load additional rounds in the magazine, up to the magazine’s total capacity, following the same procedure you used to load the first round.
3. Check again to ensure that the safety selector lever is in the “S” or “SAFE” position. Point the weapon in a safe direction. At this point you may now open the action by first rotating the charging handle outward, then pulling the charging handle in a rearward direction. Once you have pulled the charging handle as far rearward as possible, rotate it upward and engage it into the cocking handle notch located at the rear of the cocking tube.
4. Now insert the magazine in the magazine well. To insert the magazine, start by holding the weapon in one hand and the magazine in your other. Insert the magazine (making sure that the bullet end of the rounds are facing toward the front of the firearm) into the magazine well front end first with a slight bottom-forward cant, then roll the rear of the magazine up into place. When the magazine engages the magazine catch and seats itself, a distinctive “click” will be heard. At this point the magazine is fully installed. To remove the magazine for any reason, first place the safety selector lever in the “S” or “SAFE” position and then depress the magazine release located at the back of the magazine well on the right hand side of the weapon and remove the magazine by pulling it downward while rotating the rear of it toward the front of the firearm.
5. With the magazine properly inserted in the magazine well and with the weapon pointed in a safe direction you may now charge the firearm by rotating the charging handle downward out of the charging handle notch on the cocking tube and releasing it. This will allow the bolt carrier to travel forward by the tension of the recoil spring, chambering a round and putting the weapon into battery. The weapon is now “cocked” or ready to fire. Keep the firearm pointed in a safe direction and keep the safety selector lever in the “S” or “SAFE” position until you are ready to fire.



- * Do not touch the charging handle as it travels forward into battery once you release it. Doing so will hinder proper chambering of a round.**
6. With the weapon’s muzzle pointed downrange, raise the firearm to a shooting position, then acquire/choose your sight picture. Do not place your hand on or under the magazine. Once you have acquired/chosen your sight picture, place the safety selector lever in the “F” or “FIRE” position, place your pointer finger on the trigger and squeeze. Successive shots do not require “cocking” the weapon; they will cycle semi-automatically until the magazine is empty. When you are done firing, place the safety selector lever in the “S” or “SAFE” position.

***Caution:** Never point or aim your weapon in a direction that is unsafe to shoot, or at an object or surface that may cause the bullet to ricochet.

NOTE: When the last round is fired, the bolt carrier assembly will remain "in battery" (closed position).

NOTE: To adjust the windage or elevation of the weapon’s sights, please refer to the “Use of the Rear Sight” section.

USE OF THE REAR SIGHT

1. Windage Adjustment:

One full revolution of the windage adjusting knob moves the bullet's point of impact 5.14" to the left or right at 100 yards, depending on which direction it is turned.

Turning the windage adjustment knob counter-clockwise will move bullet's point of impact to the right.

Turning the windage adjustment knob clockwise will move the bullet's point of impact to the left.

To adjust the windage first shoot the firearm at 100 yards to see how much, if at all you need to adjust the bullet's point of impact to the left or right. Loosen the Phillips head rear sight clamping screw located at the back of the rear sight. Spin the windage adjustment knob in the appropriate direction as much as you need to, according to the measurements listed above. Once the correction has been completed, tighten the Phillips head rear sight clamping screw back down.

Re-shoot the firearm and adjust as necessary until the bullet's point of impact lines up with where you are aiming.



2. Elevation Adjustment:

Your rear sight has 4 different distance apertures, 100, 200, 300, and 400 yards.

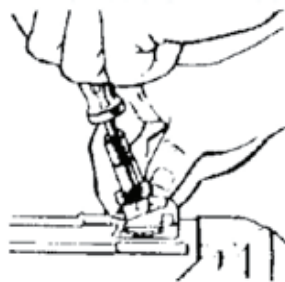
One full revolution of the rear sight cylinder moves the bullet's point of impact 5.16" up or down at 100 yards, depending on which direction it is turned.

Turning the rear sight cylinder clockwise will lower the bullet's point of impact.

Turning the rear sight cylinder counter-clockwise will raise the bullet's point of impact.

To adjust the elevation, first place the rear sight cylinder on the "1" or 100 yard aperture and shoot the firearm at 100 yards to see how much, if at all the bullet's point of impact needs to be raised or lowered. Next, use either a pair of thin tipped needle-nose pliers, or an elevation adjustment tool and looking from the top of the rear sight cylinder downward, engage the two slots that contain the catch pieces. Squeeze in with the needle-nose pliers or on the rear sight tool and hold firm. The rear sight cylinder push down

will now be able to be spun easily up or down. Spin the rear sight cylinder up or down accordingly, to equal to the measurement that the bullet's point of impact was off. Once the correction has been completed, release the needle-nose pliers or remove the elevation adjustment tool and the catch pieces will re-engage the rear sight cylinder. After performing the elevation adjustment, spin the rear sight cylinder to the desired aperture.



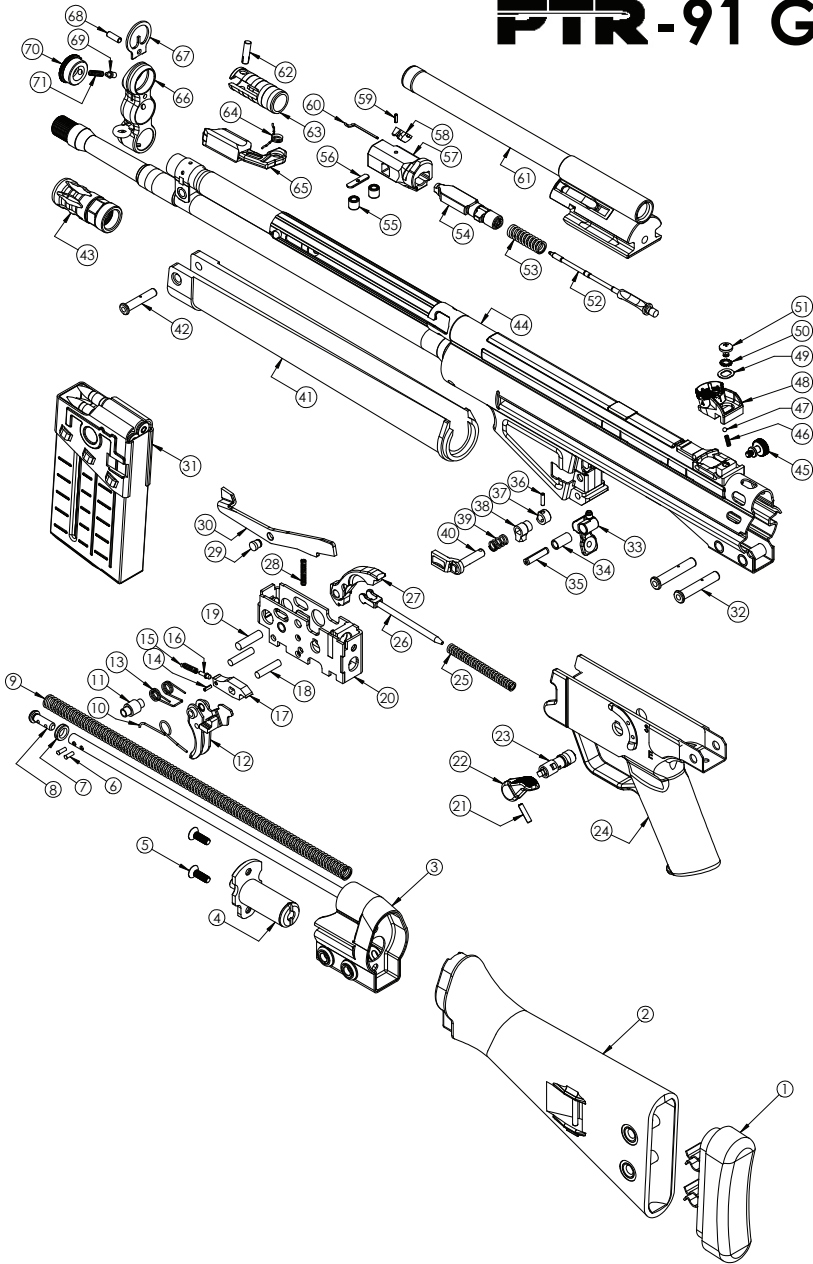
F.A.Q: FREQUENTLY ASKED QUESTIONS

- 1. What is the normal break-in period for a PTR?*
Normal break-in requires a minimum of 250-300 rounds.
- 2. What calibers are PTRs chambered for?*
 - 91 Series: PTRs have a custom chamber design that will accept both .308 and 7.62 ammunition. **NOTE:** 91 receivers will be stamp marked “.308”
 - 32 Series: 7.62x39 cal.
- 3. What is the rate of twist in a PTR barrel?*
 - 1:10
- 4. What ammo is recommended for a PTR?*
PTR recommends the use of Commercial Brass or Steel Cased, factory loaded ammo.
- 5. What is the pull weight of a PTR trigger?*
 - Standard rifles: 9-10 lbs.
 - MSG-91 series: 5-6 lbs.
- 6. What is the acceptable operating range for bolt gap on a PTR?*
The acceptable bolt gap range for the majority of the life of the firearm is .010”-.018” after the break in period is completed. PTR firearms can be expected to maintain this range for several thousand rounds, after which the gap can be expected to lower. Safe operating range is .004”.
- 7. What is a PTR constructed from?*
 - Receiver: Stamped from 1018 sheet steel.
 - Barrel: 4140 Chrome Alloy steel
 - Handguard: Milled Aircraft grade aluminum or molded polymer depending on model.
 - Stock: Molded polymer or steel depending on model.
 - Pistol Grip: Molded polymer
- 8. Are PTR barrels chrome lined?*
PTR barrels are not chrome lined.
- 9. What HK handguard will fit a PTR?*
 - Standard 18” rifle: HK91 handguards.
 - Standard 16” carbine and MSG-91/91C: HK93 handguards.
 - PDW .308 and 7.62X39: No HK, proprietary handguard only.

ITEM	PART NUMBER	DESCRIPTION	QTY.
1	AC-010478-1	BUTT PAD, GREEN	1
2	AC-011481-1	BUTT STOCK, GREEN	1
3	AC-020449-2	.308 BACK PLATE ASSY, BLACK	1
4	AC-010455	BUFFER ASSY	1
5	HW-000377	M5-0.8 x 16MM TORX FLAT HEAD SCREW	2
6	AC-000411	RIVET, STOP PIN	2
7	AC-000407	BUFFER ROD WASHER	1
8	AC-000406	.308 BUFFER ROD END, CARRIER END	1
9	AC-000408	SPRING, RECOIL	1
10	AC-000341	SPRING, TRIGGER	1
11	AC-000377	BUSHING, SEAR SPRING	1
12	AC-010345	TRIGGER ASSY	1
13	PDW-000380	SPRING, ELBOW	1
14	AC-001356	CLAMPING SLEEVE, Ø2 X 6.8	1
15	AC-000358	SPRING, SEAR	1
16	AC-000357	TRIGGER BOLT	1
17	AC-000356	SEAR	1
18	AC-000340	PIN, TRIGGER & BUSHING	2
19	AC-000361	PIN, HAMMER	1
20	AC-011386	TRIGGER BOX	1
21	HW-000205	PIN, COIL, 3MM x 15MM	1
22	PDW-012317	SAFETY SELECTOR	1
23	AC-000315	SAFETY SHAFT	1
24	PDW-030320	PISTOL GRIP, BLACK	1
25	AC-000364	SPRING, PRESSURE, HAMMER	1
26	AC-000363	PRESSURE FORK	1
27	AC-001362	US HAMMER (SEMI)	1
28	AC-000337	SPRING, EJECTOR	1
29	AC-000335	EJECTOR PIVOT	1
30	AC-000339	EJECTOR	1
31	AC-010950-01	20 RD MAGAZINE ALUMINUM	1
32	AC-010009	STOCK RETAINING PIN	2
33	AC-010131	MAG RELEASE LEVER	1
34	AC-002131	BUSHING, MAG RELEASE	1
35	HW-000227	PIN, SPRING COIL, 5MM x 22MM	1
36	AC-000124	CLAMPING SLEEVE, Ø2.5 X 10	1

ITEM	PART NUMBER	DESCRIPTION	QTY.
37	AC-000127	PUSH BUTTON	1
38	AC-000126	CONTACT PIECE	1
39	AC-000125	SPRING, CONTACT	1
40	AC-010121	MAG CATCH	1
41	GI-000654-01	HANDGUARD	1
42	AC-010010	HANDGUARD RETAINING PIN	1
43	AC-000101	A1 FLASH HIDER, .308	1
44	GI-010189-2	18" .308 WIN BARREL/REEIVER ASSY, BLK	1
45	AC-000115	WINDAGE SCREW	1
46	AC-000112	SPRING, REAR SIGHT	1
47	AC-000113	BALL, 3MM, REAR SIGHT	1
48	AC-010013	REAR SIGHT ASSY	1
49	AC-000128	WASHER, OVAL, REAR SIGHT	1
50	HW-000606	LOCK WASHER, 5MM	1
51	HW-000502	M5 X 0.80 X 6 MACHINE SCREW, PAN HEAD	1
52	AC-000202	FIRING PIN	1
53	AC-000203	SPRING, FIRING PIN	1
54	AC-000201	LOCKING PIECE, 45°	1
55	AC-000210	LOCKING ROLLER	2
56	AC-000211	ROLLER RETAINER	1
57	AC-000207	BOLT HEAD	1
58	AC-000208	EXTRACTOR	1
59	AC-000212	CLAMPING SLEEVE, Ø2 x 7	1
60	AC-000209	EXTRACTOR SPRING	1
61	AC-010221	BOLT CARRIER ASSY	1
62	HW-000137	H TYPE GROOVE PIN	1
63	AC-000136	CHARGING LEVER SUPPORT	1
64	AC-000142	ELBOW SPRING, CHARGING LEVER	1
65	AC-010144	CHARGING LEVER	1
66	AC-010155	FRONT SIGHT HOLDER	1
67	AC-000152	FRONT SIGHT BLADE	1
68	AC-000153	CLAMPING SLEEVE, Ø4 X 12	1
69	AC-000119	COMPRESSION BOLT, COCKING TUBE CAP	1
70	AC-000118	COCKING TUBE CAP	1
71	AC-000120	CONTACT SPRING, CLOSING CAP	1

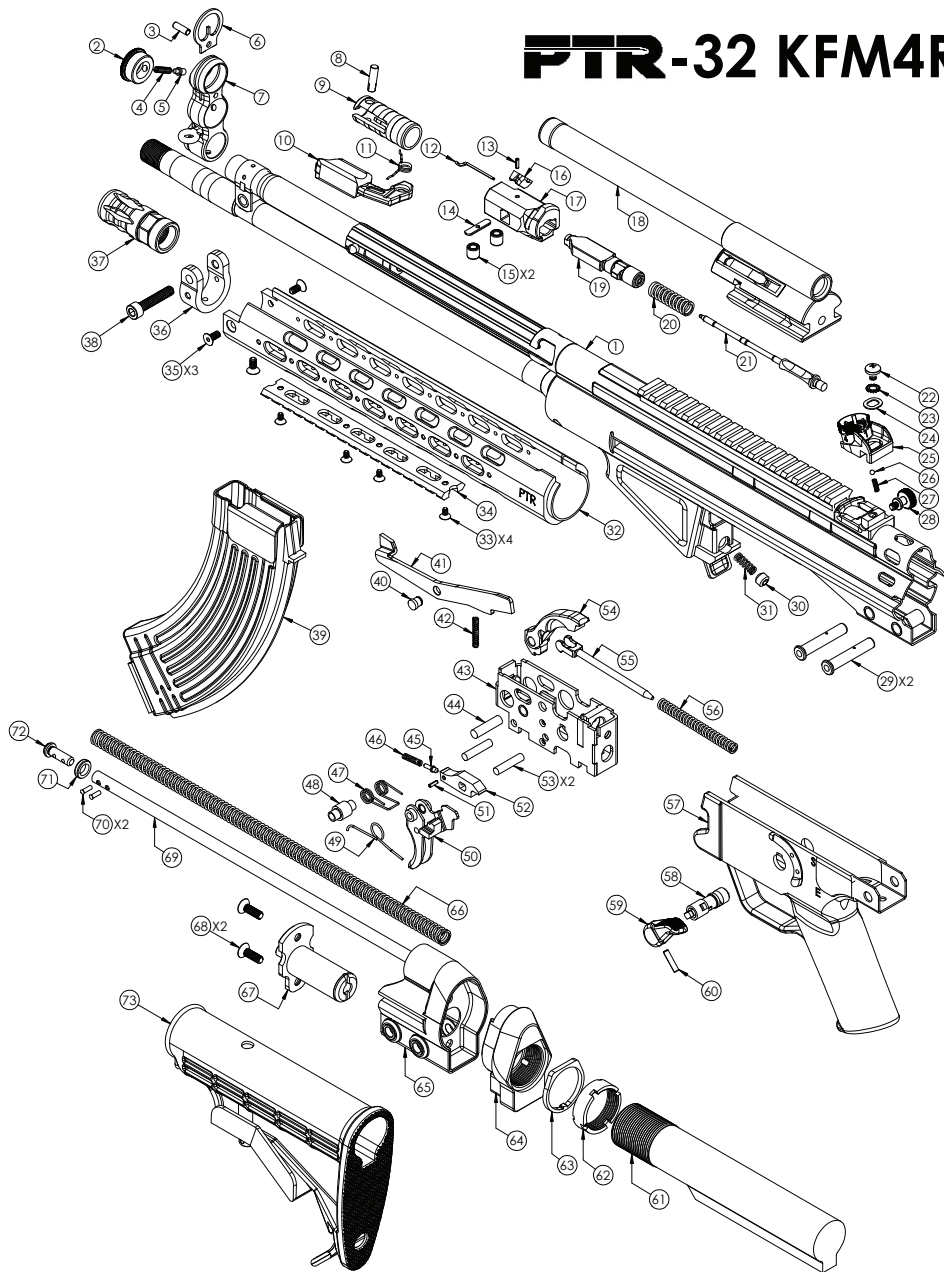
FTR-91 GI



ITEM	PART NUMBER	DESCRIPTION	QTY.
1	RC-011189	16" 7.62 BARREL/RECEIVER ASSY	1
2	AC-000118	COCKING TUBE CLOSING CAP	1
3	AC-000153	CLAMPING SLEEVE, Ø4MM X 12MM	1
4	AC-000120	CONTACT SPRING, CLOSING CAP	1
5	AC-000119	COMPRESSION BOLT, CLOSING CAP	1
6	AC-000152	FRONT SIGHT BLADE	1
7	AC-010155	FRONT SIGHT HOLDER	1
8	HW-000137	H TYPE GROOVE PIN	1
9	AC-000136	CHARGING LEVER SUPPORT	1
10	AC-010144	CHARGING HANDLE	1
11	AC-000142	ELBOW SPRING, CHARGING LEVER	1
12	AC-000209	EXTRACTOR SPRING	1
13	AC-000212	CLAMPING SLEEVE, Ø2MM x 7MM	1
14	AC-000211	ROLLER RETAINER	1
15	AC-000210	LOCKING ROLLER	2
16	AC-000208	EXTRACTOR	1
17	RC-000207	BOLT HEAD, 7.62X39	1
18	AC-010221	BOLT CARRIER ASSY	1
19	AC-002201	LOCKING PIECE, 65°	1
20	AC-000203	SPRING, FIRING PIN	1
21	AC-000202	FIRING PIN	1
22	HW-000502	M5 x 0.80 x 6 MACHINE SCREW	1
23	HW-000606	LOCK WASHER, 5MM	1
24	AC-000128	WASHER, OVAL, REAR SIGHT	1
25	AC-010013	REAR SIGHT ASSY	1
26	AC-000113	BALL, 3MM, REAR SIGHT	1
27	AC-000112	SPRING, REAR SIGHT	1
28	AC-000115	WINDAGE SCREW	1
29	AC-010009	STOCK RETAINING PIN	2
30	HW-000101	SET SCREW, M8x1.25x6, FLAT POINT	1
31	RC-000306	SPRING, MAGAZINE CATCH, .32	1
32	AC-000651	HAND GUARD, ALUMINUM	1
33	90585A014	#5-40 X 1/4" FLAT HEAD SCREW	4
34	AC-003654	RAIL, HAND GUARD, 6.5"	2
35	HW-000328	#8-32 X 3/8" FLAT HEAD SCREW	3
36	AC-000656	INSERT, HANDGUARD CLEVIS	1

ITEM	PART NUMBER	DESCRIPTION	QTY.
37	AC-000101	A1 FLASH HIDER	1
38	HW-000327	M6-1.0x30MM SHCS	1
39	MAG-010005	7.62 X 39 MAGAZINE, 30RD	1
40	AC-000335	EJECTOR PIVOT	1
41	AC-000339	EJECTOR	1
42	AC-000337	SPRING, EJECTOR	1
43	AC-011386	TRIGGER BOX	1
44	AC-000361	PIN, HAMMER	1
45	AC-000357	TRIGGER BOLT	1
46	AC-000358	SPRING, SEAR	1
47	PDW-000380	SPRING, ELBOW	1
48	AC-000377	BUSHING, SEAR SPRING	1
49	AC-000341	SPRING, TRIGGER	1
50	AC-010345	TRIGGER ASSY	1
51	AC-001356	CLAMPING SLEEVE, Ø2MM X 6.8MM	1
52	AC-000356	SEAR	1
53	AC-000340	PIN, TRIGGER & BUSHING	2
54	AC-001362	HAMMER	1
55	AC-000363	PRESSURE FORK	1
56	AC-000364	SPRING, PRESSURE, HAMMER	1
57	PDW-030320	PISTOL GRIP, BLACK	1
58	AC-000315	SAFETY SHAFT	1
59	PDW-012317	SAFETY SELECTOR	1
60	HW-000205	PIN, COIL, 3MM x 15MM	1
61	PDW-002460	MIL-SPEC EXTENSION TUBE	1
62	AC-002482	JAM NUT, M4 STOCK	1
63	AC-003482	STOCK MOUNT, WASHER, TYPE 3B	1
64	AC-001010	M4 EXTENSION TUBE ADAPTER	1
65	AC-020449-2	BACK PLATE ASSY, BLACK	1
66	AC-000408	SPRING, RECOIL	1
67	AC-010455	BUFFER ASSY	1
68	HW-000377	M5-0.8 x 16MM FLAT HEAD SCREW	2
69	AC-000444	.308 BUFFER SPRING ROD	1
70	AC-000411	RIVET, STOP PIN	2
71	AC-000407	BUFFER ROD WASHER	1
72	AC-000406	BUFFER ROD END	1
73	AC-002481	M4 STOCK	1

PTR-32 KFM4R





LIFETIME LIMITED WARRANTY

All new PTR Industries, Inc. (PTR) Firearms (Product) are warranted to the original product purchaser (Purchaser) for the lifetime of the product, provided they are properly registered and maintained IAW the Operators manual.

This limited lifetime warranty applies only if the Product was: a) purchased from an Authorized PTR Dealer in the United States; b) Properly registered by the warranty card being completed and returned to PTR, as required; and c) properly maintained IAW the Operators manual.

1. What is Covered?

PTR will, in its sole discretion, repair or replace any Product that fails, due to a defect in materials or workmanship. All warranty covered repairs are Free of Charge (FOC).

2. How to Obtain Service

Contact PTR for a Return Material Authorization (RMA) Number before returning any Product at: PTR Industries, Inc./ 101 Cool Springs Drive / Aynor, SC 29511/ Tel: 843-358-2222 x300 / Fax: 843-358-2223

Once a valid RMA has been issued, you will be given specific instruction on how to return the Product.

Caution: DO NOT send any live ammunition with the firearm. Further, no shipment(s) will be accepted without a valid RMA and no C.O.D. shipments will be accepted

3. What Is Not Covered?

This warranty does not cover defects or damage due to: (1) Unreasonable use; (2) Failure to properly maintain; (3) Failure to comply with instructions in the owner's manual including Cleaning and Break In; (4) Improper installation of original PTR parts; (5) Installation of non PTR parts; and (6) Rust, Corrosion, or Obstructions in the barrel.

PTR reserves the right to determine what constitutes unreasonable use of the Product. All wooden parts and all accessories are excluded from warranty coverage.

ANY UNAUTHORIZED ALTERATION OR MODIFICATION OF THE PRODUCT OR USE OF PARTS OR COMPONENTS NOT ORIGINALLY MADE BY PTR SHALL VOID THIS WARRANTY. PTR SHALL NOT BE RESPONSIBLE FOR ANY CLAIMS INVOLVING THE PRODUCT THAT RESULT FROM THE USE OF FAULTY, NONSTANDARD, REMANUFACTURED, OR RELOADED AMMUNITION OR AMMUNITION NOT MANUFACTURED TO NATO AND/OR SAAMISPECIFICATIONS.

UNDER NO CIRCUMSTANCES SHALL PTR BE LIABLE FOR CONSEQUENTIAL, INCIDENTAL OR SPECIAL DAMAGES OF ANY KIND, AS A RESULT OF BREACH OF: THIS, OR ANY EXPRESS OR IMPLIED WARRANTY; NEGLIGENCE; OR OTHERWISE.

PRODUCT PURCHASED BY LAW ENFORCEMENT, MILITARY, AND SIMILAR ORGANIZATIONS, FOR DUTY ISSUE TO THEIR PERSONNEL, ARE EXCLUDED HEREFROM AND ARE COVERED BY A LIMITED ONE-YEAR WARRANTY, AS ARE COMMERCIAL USE PURCHASERS.


THIS WARRANTY GIVES YOU SPECIFIC LEGAL RIGHTS, AND YOU MAY HAVE OTHER RIGHTS, WHICH VARY FROM STATE TO STATE. THIS LIMITED WARRANTY IS THE ONLY EXPRESS WARRANTY BY PTR.

This warranty applies only to the repair or replacement of the Product and only when the Product is properly handled and maintained according to the manufacturer's instructions.

Purchaser must notify PTR within thirty (30) days of noticing a defect.

PTR reserves the right to change the warranty period without notice and without incurring obligation expressly disclaims all warranties not stated in this limited warranty.

For a full list of requirements necessary to process a warranty claim please contact PTR customer support (843) 358-2222 x300 or send an email to Info@ptr-us.com and a sales representative will contact you promptly.



PTR

**To register the
warranty on
your weapon
please visit**

www.PTR-US.com



PTR